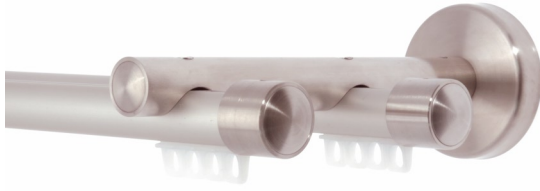


CRS

Channel Rod System - Designer Hand Draw Aluminum Rod with Stainless Steel Brackets and Finials



20 mm Track Inox

228" H CRS2019-03
114" H CRS2014-03
75" H CRS2075-03
56" H CRS2056-03
45" H CRS2045-03
37" H CRS2037-03

20 mm Track Bronze

228" H CRS2019-04
114" H CRS2014-04
75" H CRS2075-04
56" H CRS2056-04
45" H CRS2045-04
37" H CRS2037-04

28 mm Track Inox

228" H CRS2819-03
114" H CRS2814-03
75" H CRS2875-03
56" H CRS2856-03
45" H CRS2845-03
37" H CRS2837-03

28 mm Track Bronze

228" H CRS2819-04
114" H CRS2814-04
75" H CRS2875-04
56" H CRS2856-04
45" H CRS2845-04
37" H CRS2837-04



H CRS1000-01

CRS Carrier
fits both 20mm and 28mm
tracks

H CRS 1610

End Stop
For 20mm track

H CRS 1611

End Stop
For 28mm track

H CRS1800

Ceiling Bracket
for 20 mm and 28 mm
tracks



H CRS1620-03

End Cap Finial
For 20 mm track
Inox

H CRS1628-03

End Cap Finial
for 28 mm track
Inox

H CRS1720-03

Inside Socket Bracket
for 20 mm track

H CRS1728-03

Inside Socket Bracket
for 28 mm track

CRS

Channel Rod System - Designer Hand Draw Aluminum Rod with Stainless Steel Brackets and Finials



H CRS3020-03
8 cm (3 1/8") Wall Bracket
for 20 mm track



H CRS3028-03
8 cm (3 1/8") Wall Bracket
for 28 mm track



H CRS3120-03
12 cm (4 3/4") Wall Bracket
for 20 mm track



H CRS3128-03
12 cm (4 3/4") Wall Bracket
for 28 mm track



H CRS3220-03
16 cm (6 1/4") Wall Bracket
for 20 mm track



H CRS3228-03
16 cm (6 1/4") Wall Bracket
for 28 mm track



H CRS6005-03
5 cm (2") Suspension Ceiling
Bracket
for 20mm and 28 mm track



H CRS6010-03
10 cm (4") Suspension
Ceiling Bracket
for 20mm and 28 mm track



H CRS4020-03
16 cm (6 1/4") Double
Bracket for 20 mm track



H CRS4028-03
16 cm (6 1/4") Double
Bracket for 28 mm track



H CRS4120-03
16 cm (6 1/4")
Double Combination Bracket
Holds 20 mm track on the
back and a 28 mm track on
the front

