

**H SB2010-SN**  
End Cap for 20 mm poles



**H SB2011-SN**  
Finial for 20 mm poles  
4 3/8" x 1"



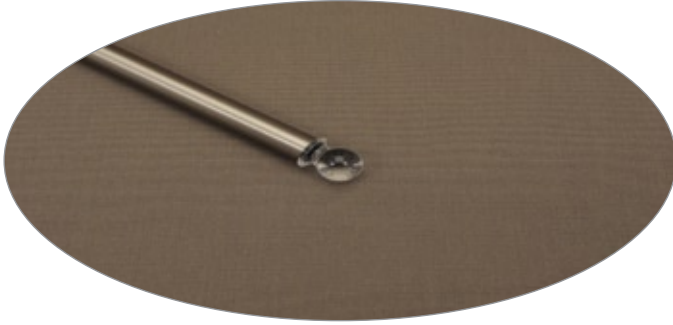
**H SB2012-SN**  
Finial for 20 mm poles  
4 3/8" x 1"



**H SB2013-SN**  
Finial for 20 mm poles  
4 3/8" x 1"



**H SB2014-SN**  
Finial for 20 mm poles  
4 3/8" x 1"



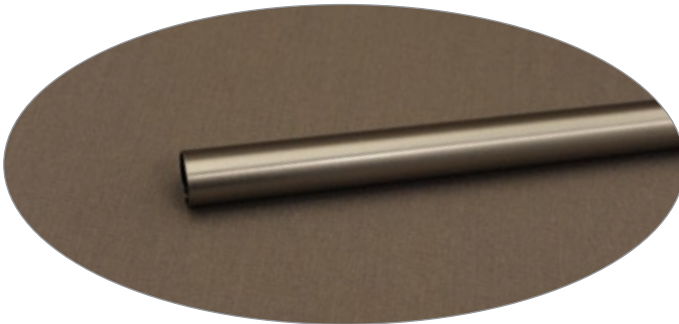
**H SB2015**  
Finial for 20 mm poles  
1 1/4" x 1"



**H SB2016-SN**  
Finial for 20 mm poles  
4 3/8" x 1"



**H SB2017-SN**  
Finial for 20 mm poles  
4 3/8" x 1"



**Poles**

**H SB2000-200-SN**  
20mm x 200cm (78.68")

**H SB2000-240-SN**  
20mm x 240cm (94.4")

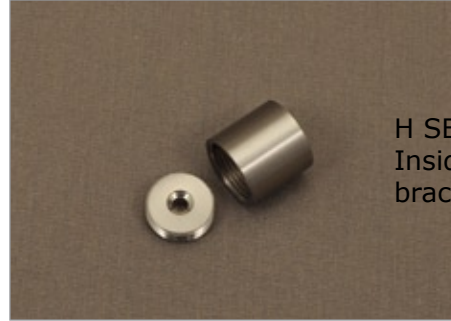


Premium Drapery Hardware 20mm (.78") Satin Nickel Series

Stuart & Bowes



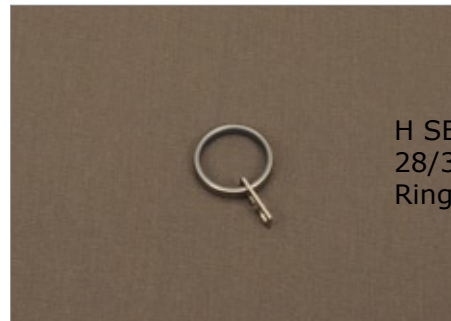
H SB2005-SN  
Ceiling or  
Wall Bracket  
2 1/4" projection  
1 5/8" to center of rod



H SB2004-SN  
Inside socket  
bracket



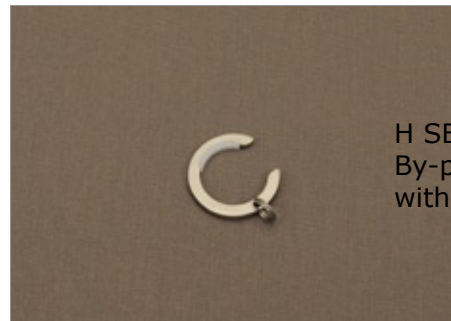
H SB2001-SN  
Wall Bracket  
3 3/4" projection  
3 1/8" to center of rod  
front of bracket unscrews to  
access a set screw



H SB2006-SN  
28/33mm Diameter  
Ring with glide insert



H SB2002-SN  
By-pass Bracket  
3 3/4" projection  
3 1/8" to center of rod



H SB2007-SN  
By-pass Ring  
with glide insert



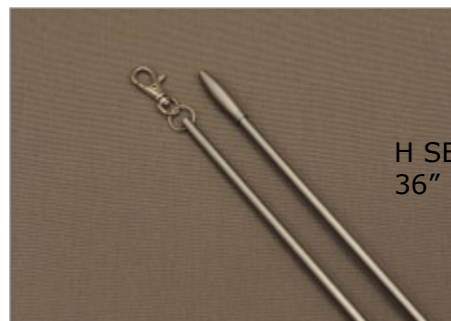
H SB2003-SN  
Double Bracket  
5 1/2" projection  
2 5/8", 4 3/4" to center of rods  
front of bracket unscrews to  
access a set screw



H SB2009-SN  
Elbow joint



H SB2008  
Splice



H SB2018-SN  
36" Baton / Fling Rod